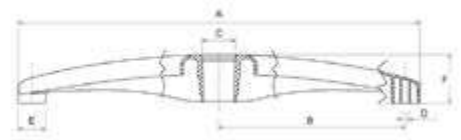


ALUMÍNIO

CHINA



MATERIAL: *Alumínio polido*

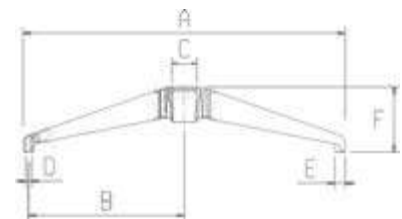


Código	A	B	C	D	E	F
BMCIA-600	∅ 600	∅ 239	∅ 50	∅ 11	∅ 42	73
BMCIA-680	∅ 680	∅ 279	∅ 50	∅ 11	∅ 42	73
BMCIA-700	∅ 700	∅ 328	∅ 50	∅ 11	∅ 42	73

LOOP



MATERIAL: *Alumínio polido*

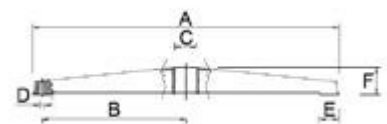


Código	A	B	C	D	E	F
BAM05501AL	∅ 640	∅ 308	∅ 50	∅ 11	∅ 22	193

FIRE



MATERIAL: *Alumínio polido*



Código	A	B	C	D	E	F
RA27	∅ 670	∅ 335	∅ 50	M8	35	152

FERRO CROMADO

ELBA



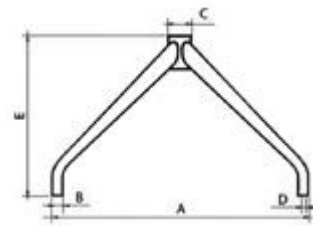
MATERIAL: *Ferro cromado*

Código	Largura (diagonal)	Altura	Chapa
BS0013AFC	700	395	165x165

TIGRE



MATERIAL: *Ferro cromado*

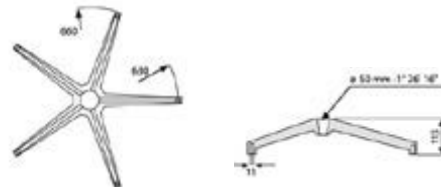


Código	A	B	C	D	E	NOTA
BAF0101270C	ø 675	ø 26	ø 50	ø 11	ø 300	Cromado
BAF0101270N	ø 675	ø 26	ø 50	ø 11	ø 300	Preto
BAF0101270B	ø 675	ø 26	ø 50	ø 11	ø 300	Branco

SPIDER



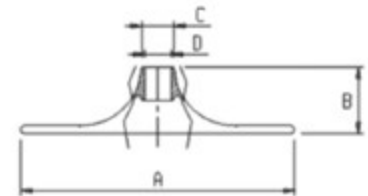
MATERIAL: *Ferro cromado*



Código	A	B	C	D
178 CR + 0245 CR	ø 407	ø 83,5	ø 70	ø 50

FERRO CROMADO

TONDA



Código	A	B	C	D
RA08	∅ 385	∅ 83,5	∅ 70	∅ 50

MATERIAL: *Ferro cromado*

MADEIRA

LCROFEBK



MATERIAL: *Ferro pintado*

Código: **LBASERW**



Código: **PLBASE**

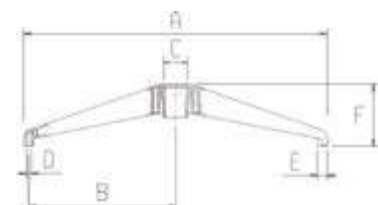


NYLON

CHIPRE



MATERIAL: *Nylon, 30% fibra de vidro*

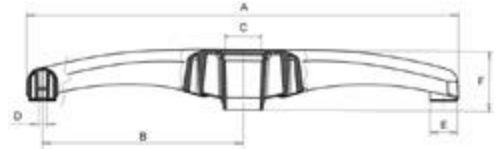


Código	A	B	C	D	E	F
RA-21	∅ 640	∅ 308	∅ 50	∅ 11	∅ 22	106

CARPET



MATERIAL: Nylon, 30% fibra de vidro

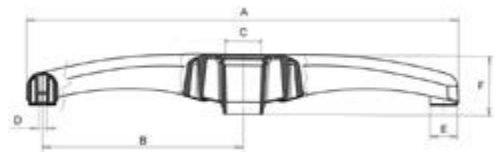


Código	A	B	C	D	E	F
BMCA-600	∅ 600	∅ 282	∅ 50	∅ 11	∅ 36	79,5
BMCA-630	∅ 630	∅ 297	∅ 50	∅ 11	∅ 36	79,5

BRASIL



MATERIAL: Nylon, 30% fibra de vidro

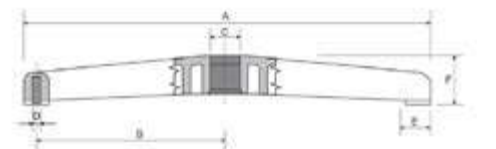


Código	A	B	C	D	E	F
BSBR-660	∅ 660	∅ 325	∅ 50	∅ 11	∅ 36	96

SUÉCIA



MATERIAL: Nylon, 30% fibra de vidro

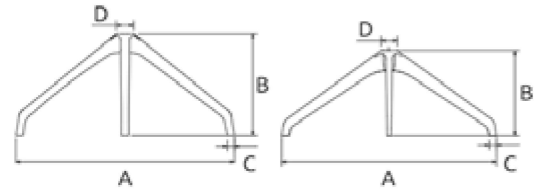


Código	A	B	C	D	E	F
BMS	∅ 540	∅ 225	∅ 50	∅ 11	∅ 30	56

SWISS



MATERIAL: *Nylon, 30% fibra de vidro*



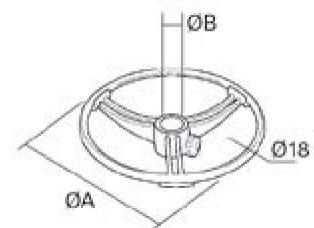
Código	A	B	C	D
RA37 - 11.70.202.05N	ø 670	325	ø 23	ø 50
RA47 - 11.70.340.05N	ø 675	270	ø 22	ø 50

APOIO DE PÉS

GRAVITY



ARO APOIO PÉS: *Cromado*



TPP



ARO APOIO PÉS: *Nylon*

