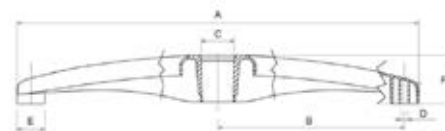


CHINA



MATERIAL: *Alumínio polido*

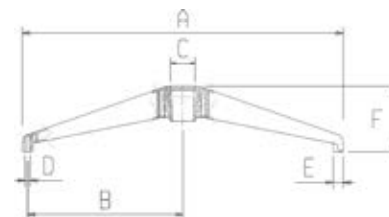


Código	A	B	C	D	E	F
BMCIA-600	ø 600	ø 239	ø 50	ø 11	ø 42	73
BMCIA-640	ø 640	ø 279	ø 50	ø 11	ø 42	73
BMCIA-680	ø 680	ø 319	ø 50	ø 11	ø 42	73

LOOP



MATERIAL: *Alumínio polido*

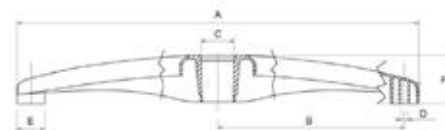


Código	A	B	C	D	E	F
BAM05501AL	ø 640	ø 308	ø 50	ø 11	ø 22	193

KIOTO



MATERIAL: *Alumínio polido*

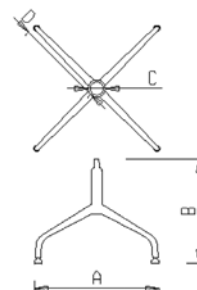


Código	A	B	C	D	E	F
BKY	ø 490	ø 225	ø 50	ø 11	ø 38	60

BURANO



MATERIAL: *Ferro cromado*

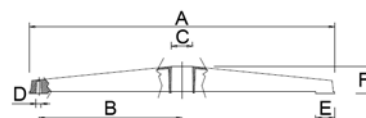


Código	A	B	C	D
BS0005AFC	ø 485	ø 400	ø 50	ø 680

FIRE



MATERIAL: *Alumínio polido*

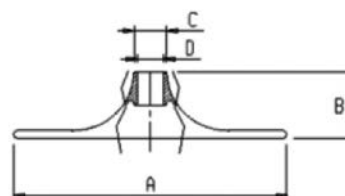


Código	A	B	C	D	E	F
RA27	ø 670	ø 335	ø 50	M8	35	152

TONDA



MATERIAL: *Ferro cromado*

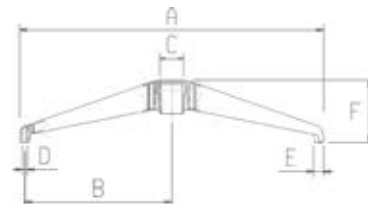


Código	A	B	C	D
RA09	ø 407	ø 83,5	ø 70	ø 50

CHIPRE



MATERIAL: Nylon, 30% fibra de vidro

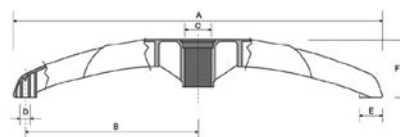


Código	A	B	C	D	E	F
RA-21	ø 640	ø 308	ø 50	ø 11	ø 22	106

HOLANDA



MATERIAL: Nylon cinza RAL 7040, 30% fibra de vidro

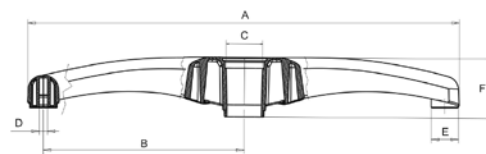


Código	A	B	C	D	E	F
BSO-540G	ø 540	ø 268	ø 50	ø 11	ø 36	68

CARPET



MATERIAL: Nylon, 30% fibra de vidro

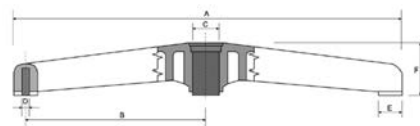


Código	A	B	C	D	E	F
BMCA-600	ø 600	ø 282	ø 50	ø 11	ø 36	79,5
BMCA-630	ø 630	ø 297	ø 50	ø 11	ø 36	79,5

IRLANDA



MATERIAL: *Nylon, 30% fibra de vidro*

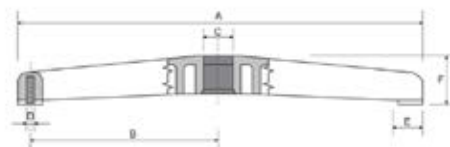


Código	A	B	C	D	E	F
BMIR-660	ø 660	ø 320	ø 50	ø 11	ø 35	94

SUÉCIA



MATERIAL: *Nylon, 30% fibra de vidro*



Código	A	B	C	D	E	F
BMS	ø 540	ø 225	ø 50	ø 11	ø 30	56